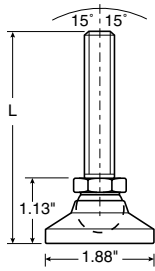


## Adjustable Levelers — Solid Metal Bases



### 592

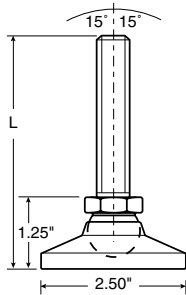
#### Metal Leveler

Equipment and machine support requiring a metal leveler.

**Maximum Recommended Static Load: 5000 lbs.**  
Includes 2:1 safety factor.

**Base Material:** Zinc plated or series 300 stainless steel

Part Number	Stem Thread	Stem Material		"L" Dim
		Zinc	Stainless	
VG-592-01-P12-L3	1/2-13	P		3.13"
VG-592-01-S12-L3	1/2-13		S	3.13"
VG-592-01-P12-L5	1/2-13	P		5.13"
VG-592-01-S12-L5	1/2-13		S	5.13"
VG-592-01-PM12-L3	M12	P		3.13"
VG-592-01-SM12-L3	M12		S	3.13"



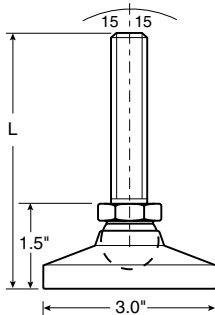
### 594

#### Metal Leveler

Equipment and machine support requiring a metal leveler.

**Maximum Recommended Static Load: 6000 lbs.**  
Includes 2:1 safety factor.

VG-594-01-P58-L3	5/8-11	P		3.25"
VG-594-01-S58-L3	5/8-11		S	3.25"
VG-594-01-P58-L5	5/8-11	P		5.25"
VG-594-01-S58-L5	5/8-11		S	5.25"
VG-594-01-PM16-L3	M16	P		3.25"
VG-594-01-SM16-L3	M16		S	3.25"



### 596

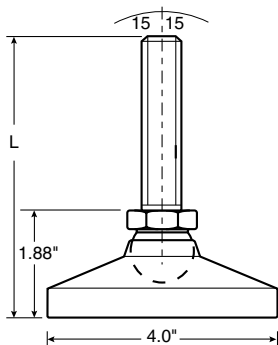
#### Metal Leveler

Equipment and machine support requiring a metal leveler.

**Maximum Recommended Static Load: 7200 lbs.**  
Includes 2:1 safety factor.

**Base Material:** Zinc plated or series 300 stainless steel

Part Number	Stem Thread	Stem Material		"L" Dim
		Zinc	Stainless	
VG-596-01-P34-L3	3/4-10	P		3.5"
VG-596-01-S34-L3	3/4-10		S	3.5"
VG-596-01-P34-L5	3/4-10	P		5.5"
VG-596-01-S34-L5	3/4-10		S	5.5"
VG-596-01-PM20-L3	M20	P		3.5"
VG-596-01-SM20-L3	M20		S	3.5"



### 598

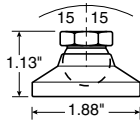
#### Metal Leveler

Equipment and machine support requiring a metal leveler.

**Maximum Recommended Static Load: 22000 lbs.**  
Includes 2:1 safety factor.

VG-598-01-P100-L6	1-8	P		6.13"
VG-598-01-S100-L6	1-8		S	6.13"
VG-598-01-P100-L10	1-8	P		9.88"
VG-598-01-S100-L10	1-8		S	9.88"

# Adjustable Levelers — Solid Metal Bases



## 592B

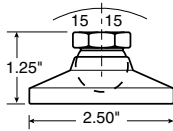
### Socket Style

Equipment and machine support requiring a metal leveler.

**Max. Rec. Static Load: 5000 lbs.**  
Includes 2:1 safety factor.

**Base Material:** Zinc plated or series 300 stainless steel

Part Number	Stem Thread	Stem Material	
		Zinc	Stainless
VG-592B-01-P12	1/2-13	P	
VG-592B-01-S12	1/2-13		S
VG-592B-01-PM12	M12	P	
VG-592B-01-SM12	M12		S



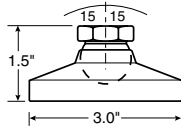
## 594B

### Socket Style

Equipment and machine support requiring a metal leveler.

**Max. Rec. Static Load: 6000 lbs.**  
Includes 2:1 safety factor.

VG-594B-01-P58	5/8-11	P	
VG-594B-01-S58	5/8-11		S
VG-594B-01-PM16	M16	P	
VG-594B-01-SM16	M16		S



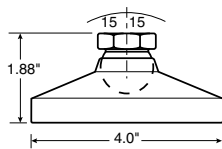
## 596B

### Socket Style

Equipment and machine support requiring a metal leveler.

**Max. Rec. Static Load: 7200 lbs.**  
Includes 2:1 safety factor.

VG-596B-01-P34	3/4-10	P	
VG-596B-01-S34	3/4-10		S
VG-596B-01-PM20	M20	P	
VG-596B-01-SM20	M20		S



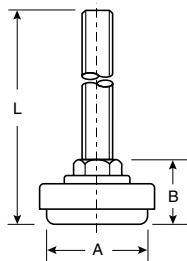
## 598B

### Socket Style

Equipment and machine support requiring a metal leveler.

**Max. Rec. Static Load: 22000 lbs.**  
Includes 2:1 safety factor.

VG-598B-01-P100	1-8	P	
VG-598B-01-S100	1-8		S



## 580-NY

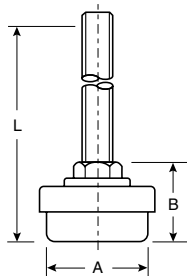
### Adjustable Glides (Nylon Base)

Light duty leveling.

**Maximum Recommended Static Load: 100 lbs.**  
Includes 2:1 safety factor.

**Base Material:** Nylon base with zinc or black plated steel finish.  
**Rockwell rating of base:** R105 to R118 steel finish.

Part Number	Stem Thread	Steel Finish			A	B	L
		Zinc	Black				
VG-580-NY-P516-L2	5/16-18	P			1.0"	0.63"	2.13"
VG-580-NY-B516-L2	5/16-18		B		1.0"	0.63"	2.13"



## 580-NE

### Adjustable Glides (Neoprene Base)

Light duty leveling.

**Maximum Recommended Static Load: 300 lbs.**  
(5/16-18 thread: 100 lbs.)  
Includes 2:1 safety factor.

**Base Material:** Neoprene base with zinc or black plated steel finish.  
**Shore rating of base:** 70 to 80

Part Number	Stem Thread	Steel Finish			A	B	L
		Zinc	Black				
VG-580-NE-P516-L2	5/16-18	P			1.0"	0.81"	2.31"
VG-580-NE-B516-L2	5/16-18		B		1.0"	0.81"	2.31"
VG-580-NE-P38-L4	3/8-16	P			1.50"	0.98"	3.98"
VG-580-NE-B38-L4	3/8-16		B		1.50"	0.98"	3.98"
VG-580-NE-P12-L3	1/2-13	P			1.50"	1.06"	3.06"
VG-580-NE-B12-L3	1/2-13		B		1.50"	1.06"	3.06"